

Date: Sunday 17 Jan 2021

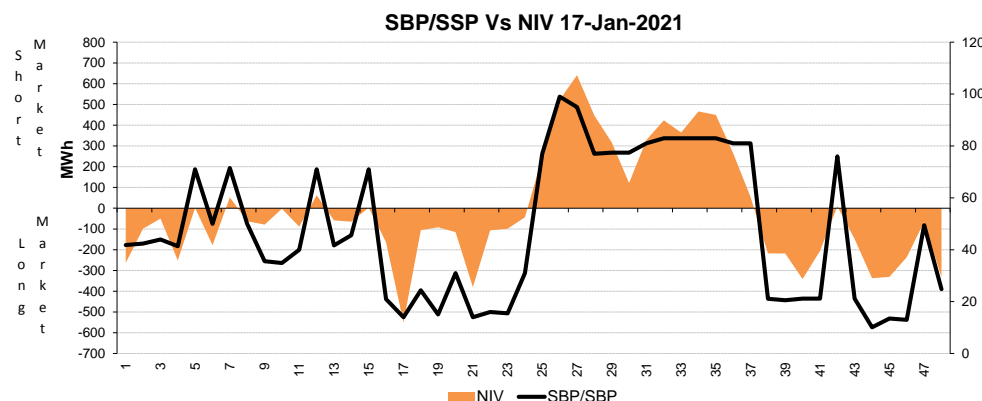
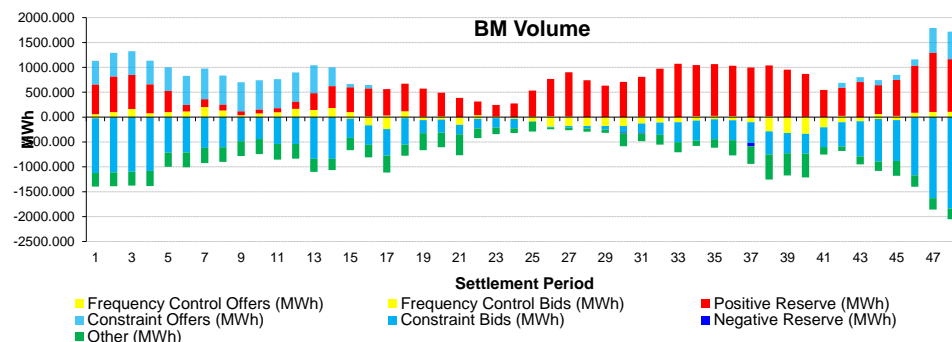
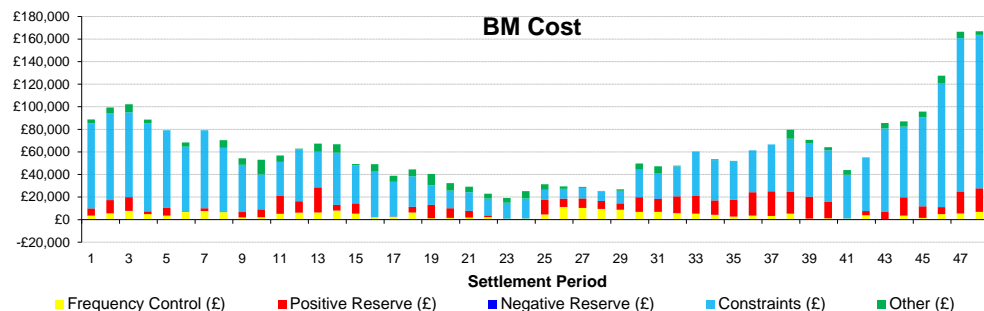
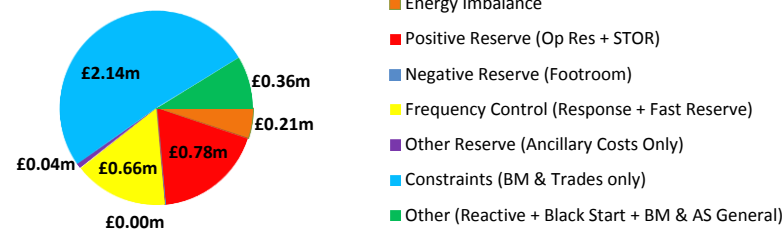
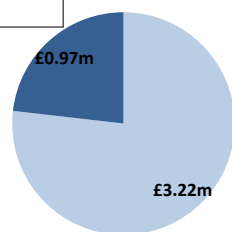
BSUoS Charge Estimate: £3.14/MWh

Total Outturn: £4.20m

Daily Balancing Costs

BM Cost (Indicative)

AS Cost (Estimate)



Western Link status: Available

Commentary

The market was short in excess of 1200MW in the afternoon. Over the morning pickup, interconnector swing operation required the support of additional dynamic response and SpinGen. Additional Dynamic Response was further deployed between the morning and the evening to account for general performance risk, and from the late evening to account for demand uncertainty. SpinGen was deployed in support of fast reserve between the morning and the evening, to account for a BM outage.

BM actions were required overnight, to buy off wind generation to solve thermal constraints in Scotland and on the England-Scotland boundary. Multiple trades on the interconnectors and on generating units and BM actions were undertaken between midnight and the late morning to mitigate the RoCoF risk. Voltage levels in England were managed with trades and BM actions.